

Recruitment 101

A guide to 2024 sorority
Recruitment

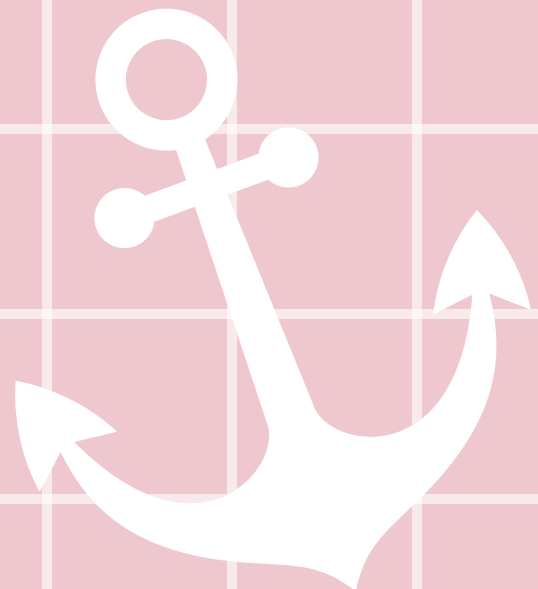


Table of Contents

Welcome.....3

The Recruitment Team...4

Panhellenic Creed.....5

Potential New Member Bill of Rights...6

Recruitment Counselors...7

Recruitment Weekend Schedule

Eligibility....8

Preparation....9

Day 1....10

Day 2....11

Day 3....12

Bid Day!....13

Chapter Highlights

Alpha Sigma Alpha....14

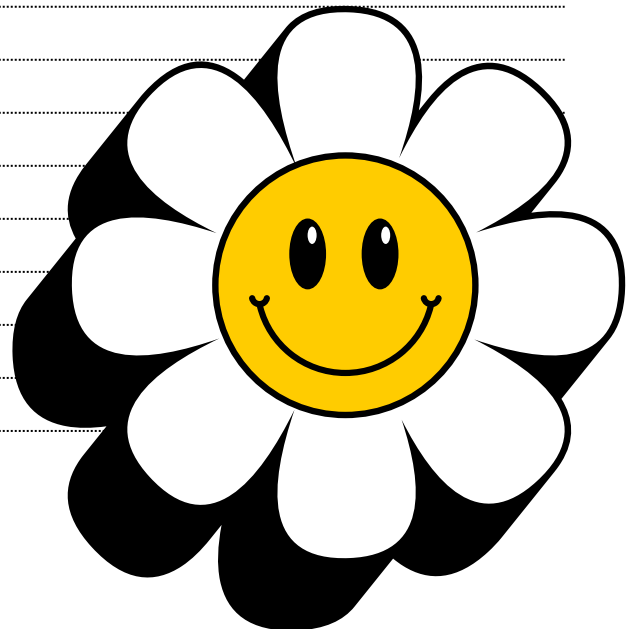
Alpha Sigma Tau....15

Delta Zeta....16

Gamma Phi Beta....17

Sigma Sigma Sigma....18

Frequently Asked Questions....19



Welcome!

Dear Future Sorority Women,

Welcome to an exciting and transformative chapter of your college journey! We are thrilled to have you join us for Panhellenic Sorority Recruitment. This is a time to explore the diverse and vibrant sisterhoods that make up our Panhellenic community, and we couldn't be more excited to see the unique contributions each of you will bring.

Throughout the recruitment process, you'll have the opportunity to meet incredible women, build lasting friendships, and discover a supportive network that will empower you throughout your college years and beyond. Our sororities are committed to fostering an environment of growth, leadership, academic excellence, and community service.

Remember, this journey is all about finding the place where you feel at home, where you can be your authentic self, and where you can grow and thrive. Be open, be yourself, and enjoy every moment of this experience.

We are here to support you every step of the way. If you have any questions or need assistance, don't hesitate to reach out to our Panhellenic Recruitment Team. Your adventure starts now, and we are so excited to see where it leads you!

Welcome to our Panhellenic family!

Warm regards,

Courtney Gates

Vice President of Recruitment & Extension

Panhellenic Council

XOXO

The Recruitment Team



Mikaylah Boulds
*Director of Recruitment
Counselors*
mboulds@eagles.usi.edu



Courtney Gates
*VP Recruitment &
Extension*
cwgates@eagles.usi.edu



Kensley Cash
*Panhellenic
President*
krcash3@eagles.usi.edu

Have Questions? Contact Us!



@USI_PANHELLENIC



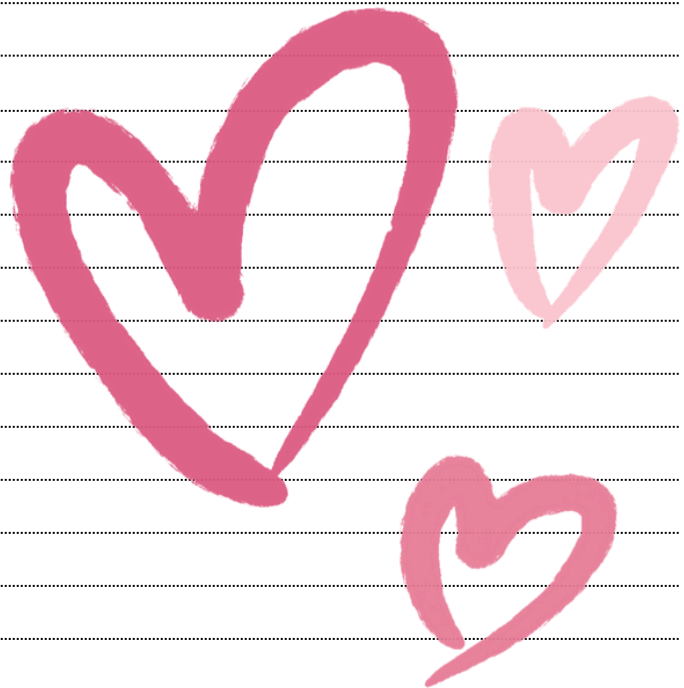
www.usi.edu/fs1

Panhellenic Creed

We, as Undergraduate members of Women's Fraternities, stand for good scholarship, for guarding of good health, for maintenance of fine standards, and for serving, to the best of our ability, our college community. Cooperation for furthering fraternity life, in harmony with its best possibilities, is the ideal that shall guide our fraternity activities.

We, as Fraternity Women, stand for service through the development of character, inspired by the close contact and deep friendship of individual fraternity and Panhellenic life. The opportunity for wide and wise human service, through mutual respect and helpfulness, is the tenet by which we strive to live.

USF Panhellenic



Potential New Member Bill of Rights

Every PNM (Potential New Member) has the right to...

- Be treated as an individual
- Be fully informed about the recruitment process
- Ask questions and receive true and objective answers from Rho Sigmas and members
- Be treated with respect
- Be treated as a capable and mature person without being patronized
- Ask how and why and receive straight answers
- Have and express opinions to Rho Sigmas
- Have inviolable confidentiality when sharing information with Rho Sigmas
- Make informed decisions without pressure from others
- Be fully informed about the NPC Unanimous Agreements implicit in the Membership Recruitment Acceptance Binding Agreement (MRABA) signing process
- Make one's own choices and decisions and accept full responsibility for the results of that decision
- Have a positive, safe, and enriching recruitment and new member experience



Recruitment Counselors

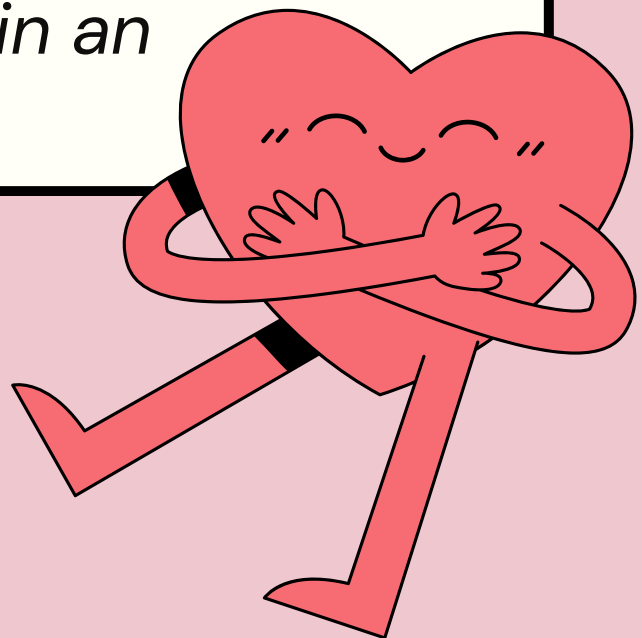
A Recruitment Counselor, better known as a Rho Sigma, is a member of the Panhellenic community who has chosen to disaffiliate from her own Chapter to help unbiasedly lead a group of PNM's through the formal recruitment process

What you need to know about your Rho Sigma:

- *You will meet your Rho Sigma at the informational sessions before the weekend*
- *She is SO excited to meet you!*
- *She has been training for this position and could not be more excited to guide you through the recruitment process*
- *Your Rho Sigma is a resource for you at all times! Whether you have a question about what to wear to rounds, how to get to class, or you are struggling with adjusting to life away from home, your Rho Sigma will be there for you before, during, and after recruitment.*
- *Your Rho Sigma has disaffiliated from her Chapter to be an unbiased resource for you.*
- *Please do not try to reveal her affiliation before she tells you on Bid Day.*
- *Your Rho Sigma was chosen from a competitive pool of applicants.*
- *We love her and hope you do too!*

Recruitment Eligibility

- *Be enrolled as a full-time, degree-seeking student at USI.*
- *Most chapters have, at least, a minimum 2.5 GPA; please note, that some sororities have a higher GPA requirement.*
- *Register for recruitment via the online form.*
- *Pay the \$30 non-refundable recruitment registration fee*
- *. Plan to attend all recruitment events. Missing any part of recruitment makes it more difficult for the women in each sorority to get to know you and may limit the ability to place you in an organization.*



Day 1: Open House & Sisterhood

September 20, 2024 4:30pm-11:10pm

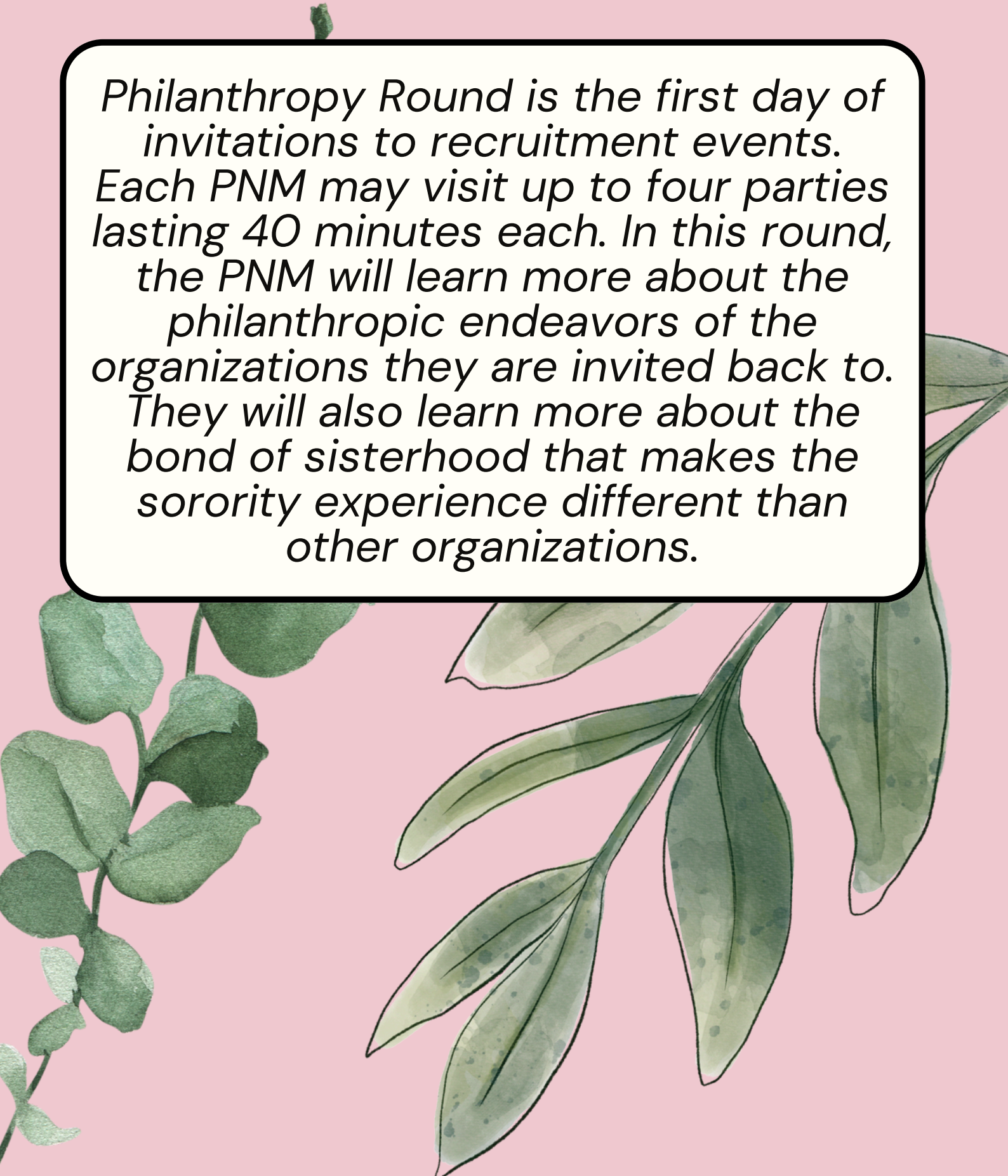
This Round, is essentially an open house. Each PNM will visit the Five participating sororities for a 40 minutes meet-and-greet event. During this time, PNM's will get a general overview of each chapter, get a peek into their sisterhood, and learn each membership requirements.



Day 2: Philanthropy

September 21, 2024 Noon-7:00pm

Philanthropy Round is the first day of invitations to recruitment events. Each PNM may visit up to four parties lasting 40 minutes each. In this round, the PNM will learn more about the philanthropic endeavors of the organizations they are invited back to. They will also learn more about the bond of sisterhood that makes the sorority experience different than other organizations.



Day 3: Preference

September 22, 2024 8:30am-1:30pm

Preference Round consists of each PNM visiting up to two events lasting 60 minutes each. The sorority members will explain to PMNs what it means to be a member of their sorority and what their sorority could offer the PNM. This round provides the deepest level of insight for the PNM to help pick their chapter. During this round, Panhellenic encourages PNMs to think back on the previous rounds and recall what they liked best about these sororities and why they would choose to join a particular group. When choosing a sorority, keep things in perspective

Bid Day

September 22, 2024

Arrive by 5:00pm

Bid Day, which occurs on the same day as the preference round, is when PNMs may receive up to one bid (invitation to join) from a chapter. If the PNM accepts the bid, they will be a new member of that chapter from that point forward. However, new members will not be initiated into the chapter until weeks after Bid Day



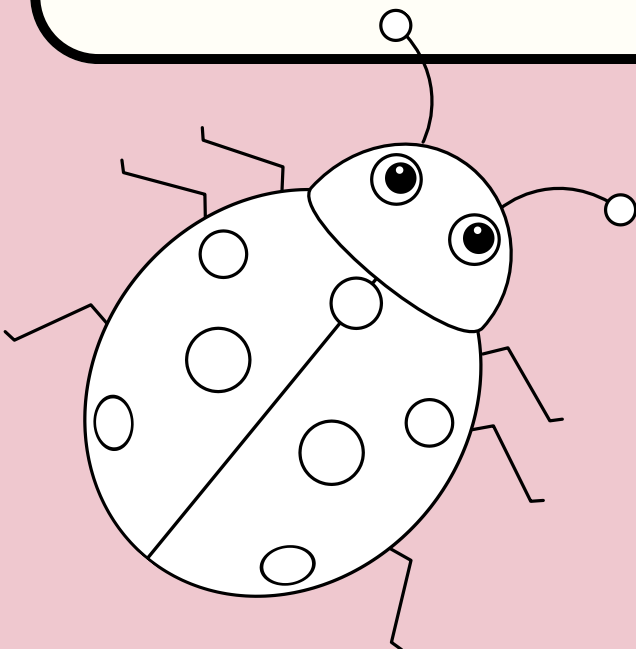
Alpha Sigma Alpha

Founded: 1901

Colors: Crimson, Pearl White, Palm Green, & Gold

Values: Balance, Generosity, Integrity, Learning, Relationships, Responsibility, Growth, Enjoyment

Philanthropies: Special Olympics, Riley's Children's Hospital, The ASA Foundation, Girls on the Run, Evansville Rescue Mission



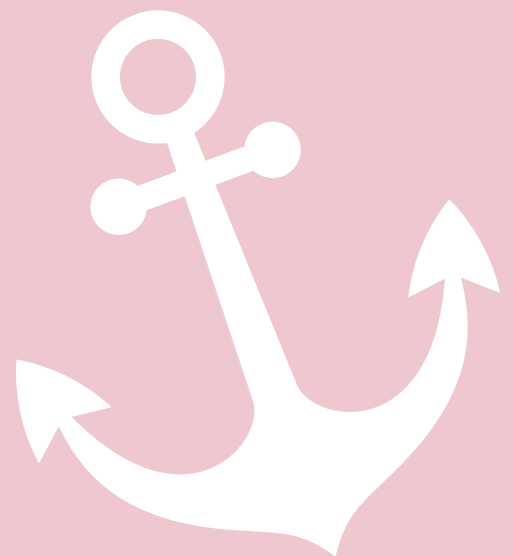
Alpha Sigma Tau

Founded:1899

Colors: Emerald Green & Victory Gold

Values: Excellence, Intellect, Graciousness, Respect, Connections

Philanthropies: Women ' s Wellness Initiative, Girls Who Code, Dress for Success, YWCA



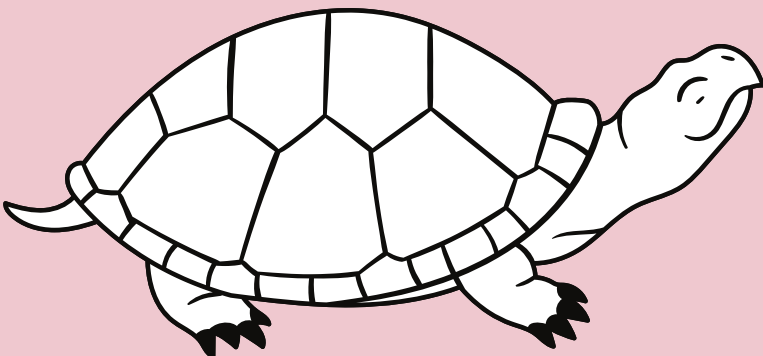
Delta Zeta

Founded:1902

Colors: Green & Rose

*Values: Friendship, Curiosity,
Generosity, Citizenship,
Empowerment, Belonging*

*Philanthropies: Starkey Hearing
Foundation, American Society for
Deaf Children, Painted Turtle
Camp, Ronald McDonald House*



Gamma Phi Beta

Founded: 1874

Colors: Blush, Brown, & Mode

*Values: Love, Labor, Learning,
Loyalty*

*Philanthropies: Girls on the Run,
Pirouette Project*



Sigma Sigma Sigma

Founded: 1898

Colors: Royal Purple & White

*Values: Wisdom, Power, Faith,
Hope, Love*

*Philanthropies: March of Dimes,
The Sigma Sigma Sigma Foundation*



Frequently Asked Questions

How do I know if joining a sorority is right for me?

The best way to know if being a sorority woman is right for you is to participate in recruitment. You will get to meet sorority women, ask questions, and learn about the benefits and expectations of membership to make an informed decision if the experience is right for you.

How do I know which sorority is right for me?

When you go through recruitment, it can be difficult knowing which chapter is best for you. Pay attention to how you feel visiting each chapter. Consider these questions:

Do you feel a connection to the members you meet?

Do you feel listened to?

Can you see yourself as a member of that chapter?

Trust your own feelings and not the opinions of others!

What is it like to go through recruitment?

When you meet each chapter through recruitment you'll learn about their sisterhood, service and philanthropy opportunities, academic support, personal development opportunities, and more.

Is the stereotype of sorority life shown in movies true?

What sorority is like in movies and what it is like, in reality, are totally different in real life. The sorority community has women who are strong, smart, leaders who come from many different backgrounds.

Why else should I join?

Sorority membership comes with many benefits. You find a group of supportive women to develop lifelong relationships. You develop skills like time management, leadership, communication, and more. You find academic support. And you get to volunteer and fundraise for local and national organizations.

Is it hard to balance a job, sorority life, and school?

While trying to juggle all of your responsibilities can be difficult, sorority can help teach you skills like time management through educational workshops. These workshops and experiences can give you actionable steps to finding a balance between your job, sorority, and school.

Dear Future Sorority Women,

Thank you for your interest and enthusiasm as you prepare for sorority recruitment. We are thrilled to get to know you and share our values, sisterhood, and opportunities that make our sororities special. Your presence brings new energy and potential, and we are excited to see the wonderful contributions you will make. We look forward to the possibility of welcoming you into our sisterhood, where lifelong friendships and unforgettable memories await. We cannot wait to meet you soon!

Warmest regards,

**Courtney Gates
VP Recruitment & Extension**

