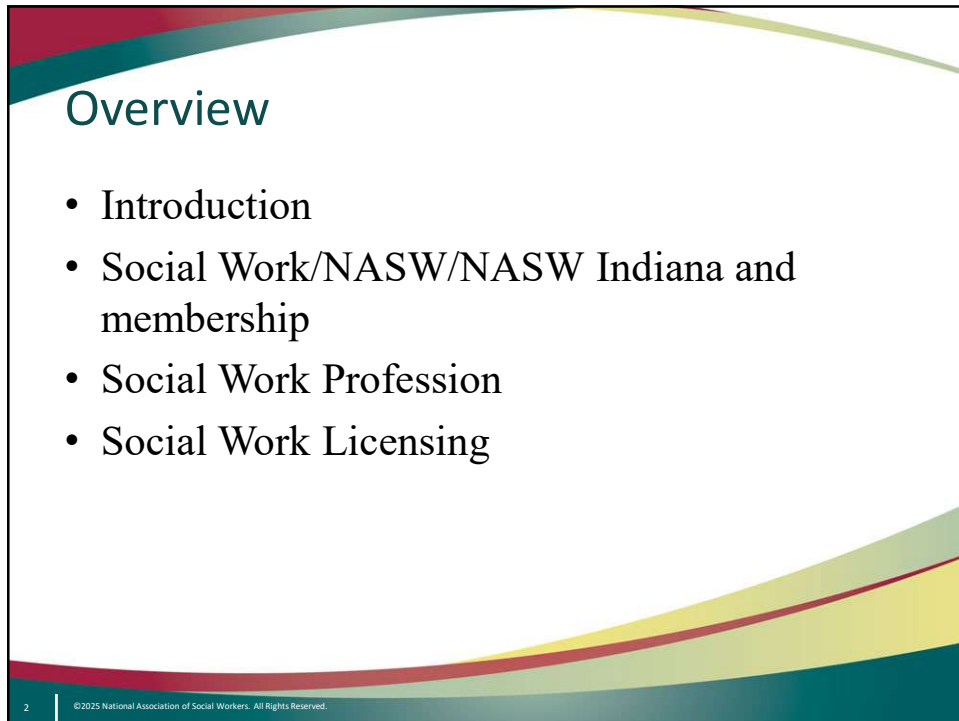


1



2

Introduction

- Active member of NASW since the early 1990's. Served as the NASW-Indiana PACE chair for over 10 years and active in the public policy committee
- Registered lobbyist in Indiana for over 15 years. Worked on behalf of low-income families and individuals at Prevent Child Abuse Indiana and running the Indiana Network for Economic Fairness.
- Served as the Deputy Director of the Division of Family Resources during the O'Bannon and Kernan administration.
- Spent 10 years doing contract work
- Executive Director NASW Indiana Chapter since April of 2017

3

©2025 National Association of Social Workers. All Rights Reserved.

3

THE NATIONAL ASSOCIATION OF SOCIAL WORKERS NASW & NASW-INDIANA

4

©2023 National Association of Social Workers. All Rights Reserved.

4

NASW

- Began in 1955 with the merger of 7 organizations
- NASW and the 55 chapters are *ONE* organization.
- NASW works to enhance the professional growth and development of its members, to create and maintain professional standards for social workers, and to advance sound social policies.

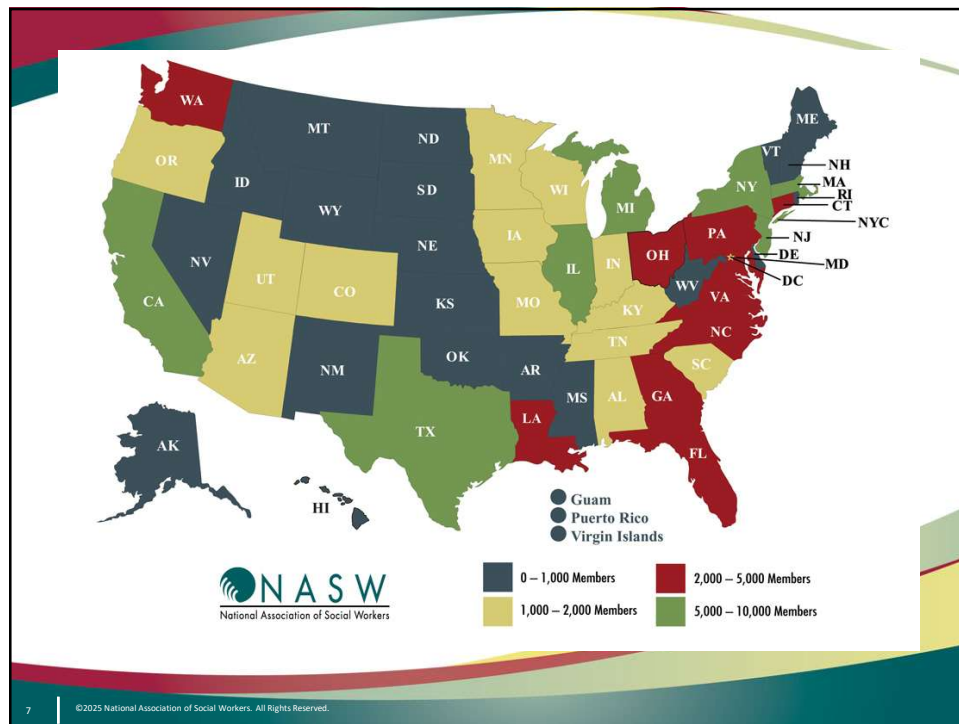
5

NASW is your professional association.



- Largest organization of professional social workers

6



7

NASW Indiana

- Membership of about 1650 and active in public policy advocacy and programming
- Indiana is divided into 7 regions. The chapter board includes representatives from each region, and a BSW and MSW student representative.
- Committees include:
 - Public Policy/Advocacy & LEAD
 - PACE - Political Action and Candidate Education
 - Program Committee with subcommittees in
 - Conference Committee
 - SOGI – Sexual Orientation & Gender Identity
 - CORED – Committee on Racial and Ethnic Diversity
 - Ethics committee

8 | ©2025 National Association of Social Workers. All Rights Reserved.

8

Joining NASW benefit's you throughout your career.

- News and information
- Advocacy efforts
- Career resources
- Training and education
- Ethics and legal guidance
- Practice resources
- Malpractice insurance
- Building a professional network



9

Membership Rates

- **Regular (Full) MSW, DSW and PhD Full Membership Dues: \$236**
- **BSW Full Membership Dues: \$158**
- **BSW and MSW Student Dues: \$60**
- **Transitional Rate for BSW & MSW student members who are continuous members after graduation.**
 - BSW students - two years of transitional dues of \$116 each year.
 - MSW students - three years of transitional dues of \$116 in years 1 and 2, and dues of \$179 in year 3
- Eligible NASW transitional members may apply for discounted professional liability insurance for the first two years of professional practice.
- NASW student members may apply for discounted professional liability insurance for student field placement.

10

©2025 National Association of Social Workers. All Rights Reserved.

10



11



12

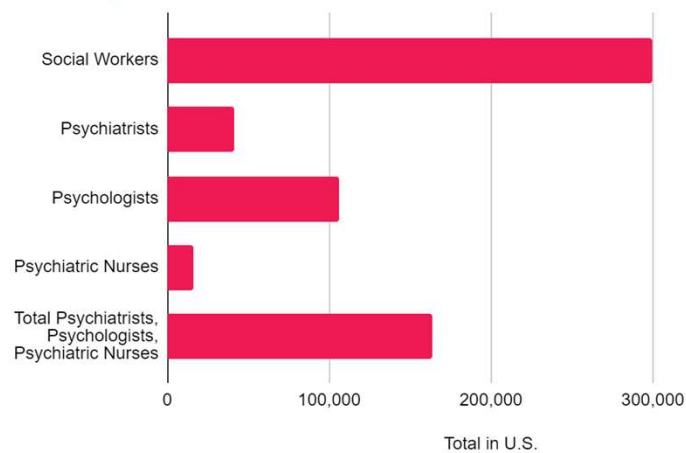
Accomplishments of Social Workers

- Civil Rights
- Voting Rights
- Minimum Wage & Employment Rights
- Reproductive Rights
- Racial Equity
- Immigration
- Telehealth
- Conversion Therapy Bans
- Interstate Licensure Compact
- SO much more!!

©2025 National Association of Social Workers. All Rights Reserved.

13

Clinically-Trained Professionals



©2025 National Association of Social Workers. All Rights Reserved.

14

Francis Perkins



First woman serving as the Secretary of Labor under FDR

Played a large role in implementing:

- Minimum wage
- Child labor laws
- Workers safety
- Civilian Conservation Corp
- Laid the ground work that lead to the creation of Social Security Act.

15

©2025 National Association of Social Workers. All Rights Reserved.

15

LICENSING: WHY IT'S IMPORTANT

16

©2025 National Association of Social Workers. All Rights Reserved.

16

Why Licensing

- Title Protection – you need your LBSW, LSW or LCSW to use the title social worker in Indiana.
- Social Work is regulated the same way that medicine and nursing are.
- Regulation assures that all social workers are competent to practice and will interact in an ethical and safe manner.
- Regulation provides a means to address concerns if a social worker steps outside the bounds of ethical and safe practice.

17

©2025 National Association of Social Workers. All Rights Reserved.

17

Licensing Board

- Establishes rules and regulations of the profession and the standard for licensure and issue licenses to social workers who meet the set professional standards.
- Requires that social workers complete continuing education to maintain their licensed status in good standing.
- Investigates complaints and as necessary, decide whether a social worker continues to deserve a license.

18

©2025 National Association of Social Workers. All Rights Reserved.

18

QUESTIONS ON WHY LICENSING IS IMPORTANT?

NEXT SECTION - OVERVIEW OF THE LICENSING PROCESS IN INDIANA

19

©2025 National Association of Social Workers. All Rights Reserved.

19

3 LEVELS OF LICENSING IN INDIANA

1. **LBSW – Licensed Bachelor of Social Work**
2. **LSW – Licensed Social Worker - Masters level license**
3. **LCSW – Licensed Clinical Social Worker – Masters plus experience.**

20

©2025 National Association of Social Workers. All Rights Reserved.

20

Licensing Oversight

- The Behavioral Health and Human Services Licensing Board provides oversight for
 - Social Work
 - Marriage and Family Therapists
 - Mental Health Counselors
 - Addictions
- <https://www.in.gov/pla/professions/behavioral-health-and-human-services/>

21

©2025 National Association of Social Workers. All Rights Reserved.

21

Step 1

<https://www.in.gov/pla/professions/behavioral-health-and-human-services/>

INDIANA PROFESSIONAL LICENSING AGENCY

Behavioral Health and Human Services

PLA > Professions > Behavioral Health and Human Services

Announcements

Licensing Information

- [Apply for, Renew, or Maintain your license](#)
- [Application Instructions and Requirements](#)
- [Renewal Forms, List of Approved CE Providers, and Renewal Cycle](#)
- [Telehealth Certification for Out-of-State Practitioners](#)
- [National Exams & Testing Agency Contacts](#)
- [Continuing Education Provider Application and Information](#)
- [Fee Schedule](#)

22

©2025 National Association of Social Workers. All Rights Reserved.

22

Step 2

<https://www.in.gov/pla/professions/behavioral-health-and-human-services/behavioral-health-and-human-services-licensing-information/#1A1>

Click on the license you're applying for to review the:

- Application checklist/ requirements
- Detail of the requirements and links for more information

The screenshot shows the Indiana Professional Licensing Agency website. At the top, there is a search bar and a list of professions. A red arrow points to the 'Social Workers (LSW)- Master Level' option in the list.

23 | ©2025 National Association of Social Workers. All Rights Reserved.

23

MSW License Application Checklist

Application Checklist

For Applicants who have graduated with a Master of Social Work Degree. Use this section to ensure you've submitted all requirements.

Completed Application	Application Fee (\$50)	Name Change Documentation
Positive Response Documentation	Criminal Background Check	Official Transcripts
License Verification		

Requirements: Detailed

- **Completed Application:** Submit online.
- **Application fee of \$50.00:** Fee is paid online during the online application process. **All application fees are nonrefundable.**
- **Criminal Background Check**
- **Positive Response Documentation:** If you answer "Yes" to any questions on the application, explain fully in a statement that includes all details. Include the violation, location, date, cause number, and disposition. Submit copies of court documents for each instance to support the statement. If malpractice, provide the name(s) of the plaintiff(s). Please upload at the time of application.
- **Name Change Documentation:** Documentation of any legal name change if your name differs from that on any of your documents. Documentation may include a copy of your marriage certificate or divorce decree. Please upload at the time of application.
- **Official Transcripts:** Applicants must upload an official transcript from their university. The transcripts from your university where you obtained your degree must show that all requirements for graduation have been met and the date the degree was conferred.
- **Letter of Good Standing:** If you are in your last semester of your program, and wish to have approval to take your national exam, you must provide a letter of good standing from your university.
- **Verification of Licensure (if applicable):** If you hold a license or certification in another State, you must provide verification of that information. Verifications must be completed from the state of issuance and can be uploaded to your online account. Those jurisdictions may provide their own verification, or complete our verification form [here](#). **Copies of license cards from other jurisdictions are not accepted as proof of verification of licensure.**
 - The top portion of this form should be completed by the applicant and sent to the appropriate state licensing board for their submission to the Indiana Professional Licensing Agency. The form may be duplicated if you hold multiple licenses. Other jurisdictions may charge a fee to verify licensure. You may wish to contact the state boards prior to your request for verification. You do not need to complete this form if you only hold licensure or certification in the State of Indiana.
- **Examination Approval:** Once all documentation has been reviewed and approved, an applicant who has not taken the national exam will receive an exam approval from our office. An applicant who has been approved by the Board to take the examination must take the examination within one (1) calendar year from the date of the initial Board approval. If the applicant has not taken the examination within one (1) calendar year from the date of initial Board approval, the approval will be invalid and the applicant must submit a new application and all required documentation must be resubmitted. **No extensions will be granted. Please review the Exams and Testing section for contact information on the ASWB Master exam. If you have already taken the ASWB Master exam, please contact that agency to provide an official copy of your score.**
- **Official Score Report:** Upon completion of the ASWB Master level examination, results will be released to our office the following week from when you took your exam. If you passed the examination, your master of social work license will be issued. If you failed the examination, you will receive notification from our office via email. Please follow the Repeat Application instructions on our website for information on how to reapply to retake the examination. Please allow 7 to 10 business days for our office to process examination results once they are received.

24 | ©2025 National Association of Social Workers. All Rights Reserved.

24

Step 3
<https://www.in.gov/pla/professions/behavioral-health-and-human-services/>

Announcements

Licensing Information

- [Apply for, Renew, or Maintain your license and more!](#)
- [Application Instructions and Requirements](#)
- [Renewal Forms, List of Approved CE Providers, and Renewal Cycle](#)
- [Telehealth Certification for Out-of-State Practitioners](#)
- [National Exams & Testing Agency Contacts](#)
- [Continuing Education Provider Application and Information](#)
- [Fee Schedule](#)

25 ©2025 National Association of Social Workers. All Rights Reserved.

25

Step 5
<https://www.in.gov/pla/license/>

Everything you need to complete the application process can be found on this page. You can:

1. Create an account to process all licensing applications.
2. Complete your renewal process
3. Track your application
4. Submit documents

And more.

Apply Online

Apply for your professional license here!

[Apply for a New License](#)

Renew Online

Renew your license and maintain your account here!

[Renew Your License](#)

Indiana Professional Licensing Agency Online Services

Schedule an Appointment
 The PLA is now accepting in-person appointments for limited transactions at our office.
[Get Started >>](#)

Apply for a New License
 Apply for most licenses issued through the Professional Licensing Agency 24/7.
[Get Started >>](#)

Renew License and Update Address
 Renew most licenses issued through the Professional Licensing Agency and update your address 24/7.
[Get Started >>](#)

Track Your Application
 Track outstanding items to complete your pending license applica
[Get Started >>](#)

Submit Documents
 Submit documents to the Professional Licensing Agency online using the "License Update" service.
[Get Started >>](#)

26

26

Things to Remember - Application

The screenshot shows a web browser window with the URL `mylicense.in.gov/eGov/Questions.aspx`. The page contains a series of questions with dropdown menus for answers. A red arrow points to the question: "Except for minor violations of traffic laws resulting in fines, and arrests or convictions that have been expunged by a court." Below this question are five numbered sub-questions regarding arrests and convictions.

Has disciplinary action ever been taken regarding any license, certificate, registration, or permit you hold or have held?	No
Have you ever been denied a license, certificate, registration or permit to practice any regulated health occupation in any state (including Indiana), country, or U.S. territory?	No
Do you have any condition or impairment (including a history of alcohol or substance abuse) that currently interferes, or if left untreated may interfere, with your ability to practice in a competent and professional manner?	No
Except for minor violations of traffic laws resulting in fines, and arrests or convictions that have been expunged by a court.	
(1) have you ever been arrested;	Yes
(2) have you ever entered into a prosecutorial diversion or deferment agreement regarding any offense, misdemeanor, or felony in any state;	No
(3) have you ever been convicted of any offense, misdemeanor, or felony in any state;	Yes
(4) have you ever pled guilty to any offense, misdemeanor, or felony in any state; or	No
(5) have you ever pled <i>nolo contendere</i> to any offense, misdemeanor, or felony in any state?	No
Have you ever been denied staff membership or privileges in any hospital or health care facility or had such membership or privileges revoked, suspended or subjected to any restriction, probation or any other type of discipline or limitations?	No
Have you ever been admonished, censured, reprimanded or requested to withdraw, resign or retire from any hospital or health care facility in which you have trained, held staff membership or privileges or acted as a consultant?	No
Have you ever had a malpractice judgment against you or settled any malpractice action?	No

27 | ©2025 National Association of Social Workers. All Rights Reserved.

27

Licensing in Indiana

1. Submit appropriate application for LBSW, LSW or LCSW.
You will need:
 - Official transcripts from CSWE program showing the degree you earned.
 - Complete criminal history check
 - Pay fee
2. Once approved you will receive email confirmation from the BHHS licensing board to contact ASWB and register for your test.
3. Temporary permit LSW & LBSW is good for 12 months or until you pass the test. Only 1 permit allowed its part of application and costs \$25

28 | ©2025 National Association of Social Workers. All Rights Reserved.

28

Licensing via Test

- Testing for all 3 levels of licensing is through Association of Social Work Boards
www.aswb.org
- You can not take the test until your application is approved by the Indiana licensing board.
- You should review information from the ASWB website prior to registering for your test.
- Once you've registered with ASWB to take the test the next step is scheduling your test at Pearson Vue.
- All information is available online at
www.aswb.org

29

©2025 National Association of Social Workers. All Rights Reserved.

29

Reciprocity for LBSW, LSW, LCSW

- Have a valid license to practice from another state or jurisdiction;
- Passed an exam substantially equivalent to the exam required for Indiana licensure;
- Do NOT have a pending disciplinary action in another state and pass criminal history/background check; and
- Submit your completed application with the \$50 application fee and all required documents.

30

©2025 National Association of Social Workers. All Rights Reserved.

30

Questions About Licensing

At <https://www.in.gov/pla/professions/behavioral-health-and-human-services/> you can find:

- Licensing information for each license;
- Applications instructions;
- FAQ section;
- Statute and rules;
- Information on criminal background checks;
- Continuing education; and
- License Renewal

31

©2025 National Association of Social Workers. All Rights Reserved.

31

QUESTIONS ON LICENSING PROCESS?

32

©2025 National Association of Social Workers. All Rights Reserved.

32

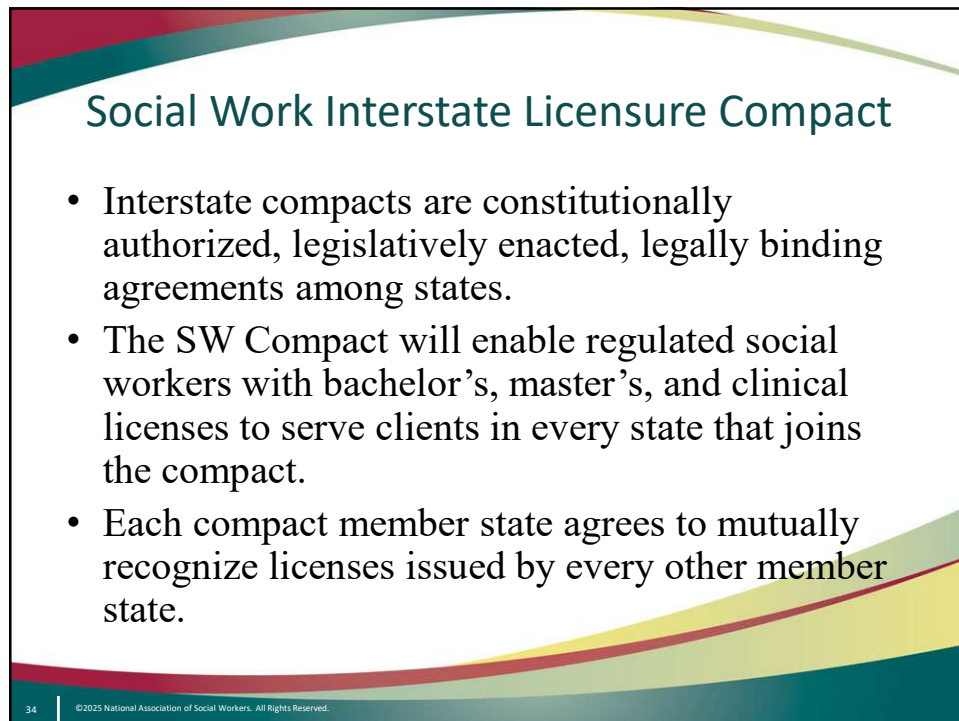


**SOCIAL WORK INTERSTATE
LICENSING COMPACT**

22 States have approved the Compact
Find info at www.swcompact.org

33 | ©2025 National Association of Social Workers. All Rights Reserved.

33

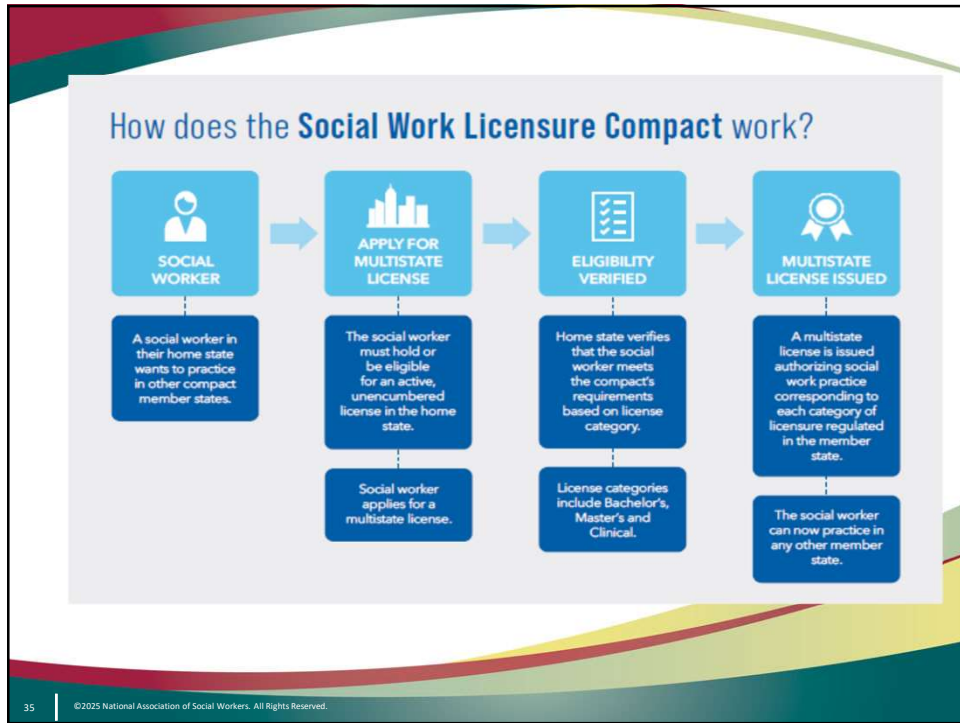


Social Work Interstate Licensure Compact

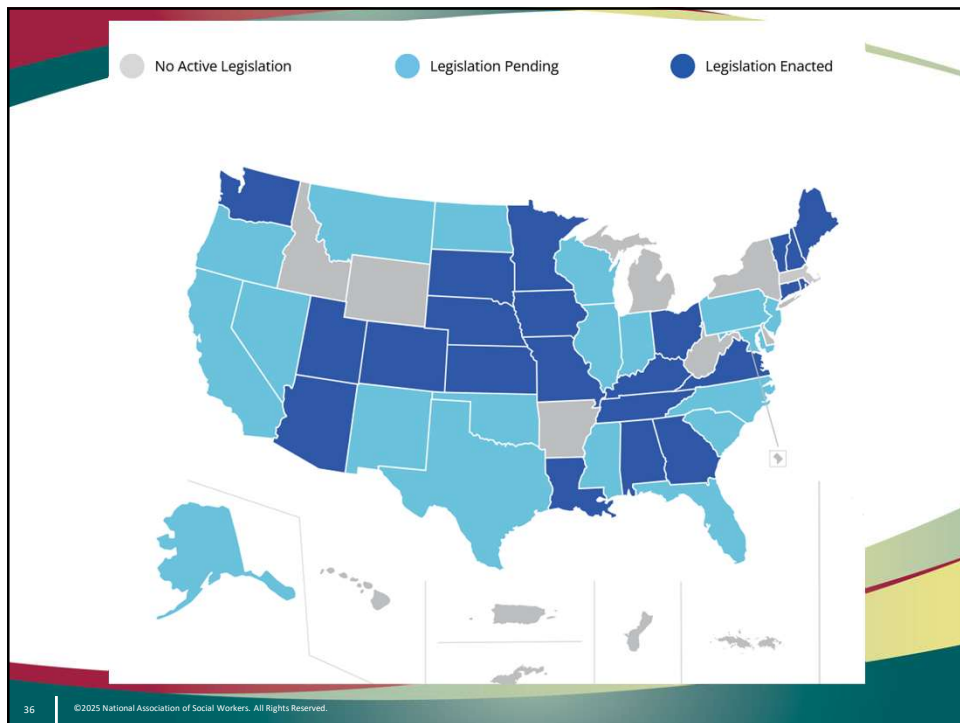
- Interstate compacts are constitutionally authorized, legislatively enacted, legally binding agreements among states.
- The SW Compact will enable regulated social workers with bachelor's, master's, and clinical licenses to serve clients in every state that joins the compact.
- Each compact member state agrees to mutually recognize licenses issued by every other member state.

34 | ©2025 National Association of Social Workers. All Rights Reserved.

34



35



36

Benefits of the Social Work Licensure Compact for Licensees

- Eases mobility
- Expands employment opportunities
- Allows for continuity of care for clients who move to a new jurisdiction or travel.
- Leverages technology like telehealth
- Simplifies licensing process by replacing reciprocity license with a compact license.

37

©2025 National Association of Social Workers. All Rights Reserved.

37

Benefits of the Social Work Licensure Compact for States/Licensing Boards

- Provides a tool to address workforce shortages & strengthening labor markets
- Expands consumer access to licensed social workers
- Reduces application processing time and cost.
- Expands cooperation among state licensing boards on investigations and disputes
- Enhances public safety

38

©2025 National Association of Social Workers. All Rights Reserved.

38

Compact Resources & Information

SW Compact website – www.swcompact.org

NASW Compact info & Resources

<https://www.socialworkers.org/Advocacy/Interstate-Licensure-Compact-for-Social-Work>

39

Where to find Information - NASW

NASW National website - www.socialworkers.org

- Membership
- Practice area specific information
- Federal advocacy issues & advocacy alerts
- Information on licensing and the Social Work Compact
- Ethics

40

For more information on NASW Indiana please
visit our website at www.naswin.org

Email us at info.naswin@socialworkers.org

Call us at 317-923-9878

Follow us on Facebook, Instagram, LinkedIn &
Bluesky



©2025 National Association of Social Workers. All Rights Reserved.