



The Unseen Child

Content Warning: The following presentation contains themes of child abuse and neglect. Please practice excellent self care following the presentation.



Katie Vinci LSW
 School Based Therapist
 Adult and Child Health
 USI BSW & MSW Alumni
 Childrens Book Author

C o n t e n t s

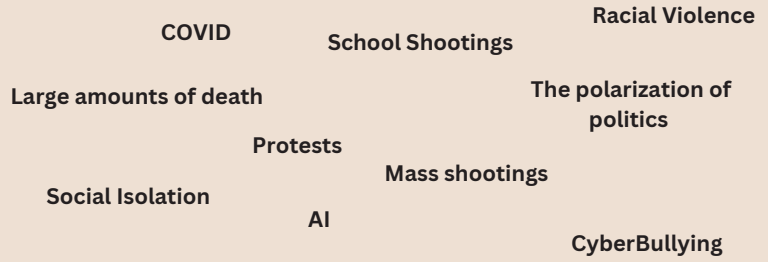
- Introductions
- Content Warning
- The Statistics
- Mental Health Referrals
- “The Big Three”
- Journey
- Bridging The Gap

INDIANA

- 28% of Indiana adolescents ages 12-17 have a mental, emotional, developmental, or behavioral problem (National Survey of Children's Health, 2017-2018).

- 10% of Indiana high school students attempted suicide one or more times during the last 12 months (Youth Risk Behavior Survey, 2015).

Challenges that children in the last 10 years have had to face



Discussion

- What are some behaviors a child might exhibit that would warrant a mental health referral?

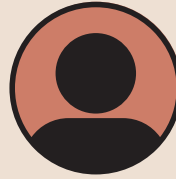




- Isolation
- Withdrawal
- Lethargy
- Inability to focus
- Feelings that are inappropriate to the situation
- Lack of affect
- Strong mistrust of others
- Violent outbursts
- Signs of substance abuse
- Expressions of general unhappiness over a period of several weeks
- Frequent class absence or “disappearance” over extended periods
- Gain or loss of significant amounts of weight
- Abrupt change in manner, style, or personal hygiene
- Increasing dependence on you

(Saint Mary's College of Maryland, 2024)

Three Sibling



Female



Female



Male

A Journey Through The Unseen Child

Adverse Childhood Experiences

Homelessness

Abuse

Addiction

Loss By Suicide

Domestic Violence

Poverty

ACE Score: 9



- PTSD
- ADHD
- Chronic Health Conditions

ACE Score 8:



- PTSD
- Depression
- Dropped out of Highschool
- Chronic Health Conditions

ACE Score 6:



- Autism
- BPD

“Only when we know our own darkness well can we be present with the darkness of others. Compassion becomes real when we recognize our shared humanity.”

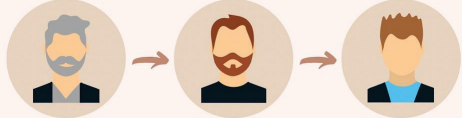
— Pema Chödrön,

What if I told you that these siblings went undetected by teachers, coaches, and child protective services ?

Discussion

How does a families culture influence thier trust in social services?

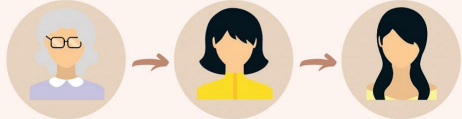
@THEPRESENTPSYCHOLOGIST



Someone who experiences trauma (like abuse) can suffer from lifelong effects

Effects like anxiety, shame, depression, substance abuse and risky behavior

When that person has children, the impact of the trauma can affect them



Parents may develop a neglectful/authoritative style or project their trauma on their children

As a result, the child develops a trauma due to growing up with a traumatised parent

This is 'intergenerational trauma' as the effects of trauma are passed on through generations

Adult and Child Split /5050 program

Does not bill insurance

This helps families who do not have insurance or may have private insurance that would require high out of pocket costs.

Does not diagnose

In this program therapists do not give a diagnosis. This is due to not billing insurance. Therapist are able to make clinical judgements and treatment decisions.

Families never receive a bill

Therapy and Skills Development services are paid for by the school cooperation through grants and through Adult and Child.

ADULT & CHILD
HEALTH



Questions?

Contact

Kvinci@adultandchild.org

References

In. (n.d.). <https://www.in.gov/health/mch/files/adolescent-health-fact-sheet.pdf>

Signs and symptoms of distress in students. Wellness Center. (2022, February 18).
<https://www.smcm.edu/wellness/help-a-student/signs-and-symptoms-of-distress-in-students/>